



Deepomatic Lens for telecoms

The only field-ready AI computer vision platform for fiber rollout, from survey, construction, connection to maintenance. With Deepomatic Lens, automate quality inspection and document your network reliably.



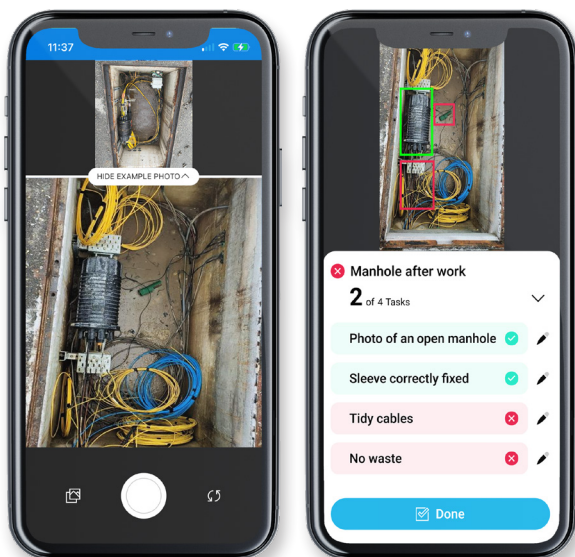
+20M
field jobs analyzed per year

+30,000
daily field users



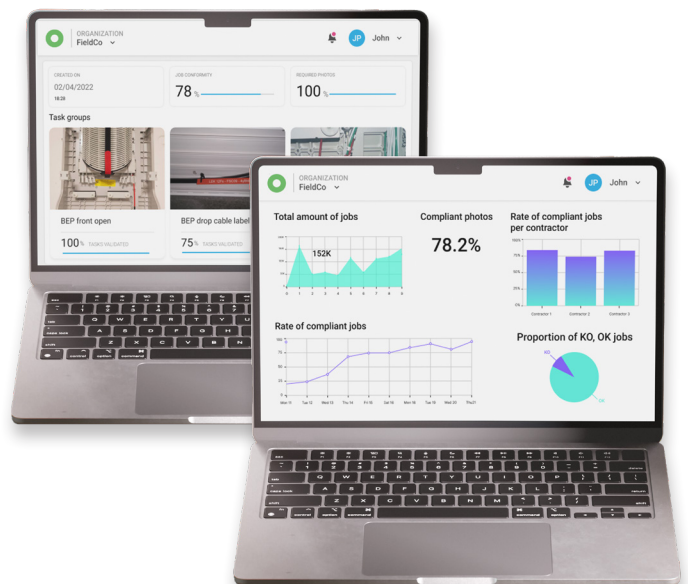
In the field

Live feedback to field worker on photo conformity and work compliance



In the office

Dedicated back-office dashboards providing access to photos, QC results and operational KPIs



Benefits



First-Time-Right field jobs

Fiber network photos are analyzed in real-time to ensure your workers perform their job right the first time.



Enriched as-builts

Get the full stack of data on network assets and their environment to create accurate as-built documentation



Accurate closeouts

Photo documentation conformity is verified in real-time to provide operator and contractor organizations reliable proof about the work done in the field



Process automation

Gain efficiency by automating processes such as contractor payment, asset inventory and asset condition monitoring.

Why Deepomatic Lens?



Easy integration

Faster implementation thanks to existing integration with IQGeo Workflow Manager, Praxedo, Zinier, Oracle, SiteTracker, Render & more

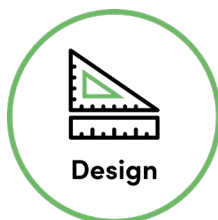


Unbeaten AI computer vision expertise

Proven expertise in telecom with off-the-shelf AI models for a faster time-to-value

IQGeo, a single platform across the network lifecycle

Only IQGeo enables operators to deploy and operate networks across the entire lifecycle, from planning and design to operations and sales.



Design



Build



Operate



Monetize

- Automated planning and estimating
- Accelerated network designs
- Streamlined field reporting

- Automated quality inspection
- Maximized network revenues
- Single view of network data

Get the speed, efficiency and precision you need to deliver great service and stay ahead of the competition.